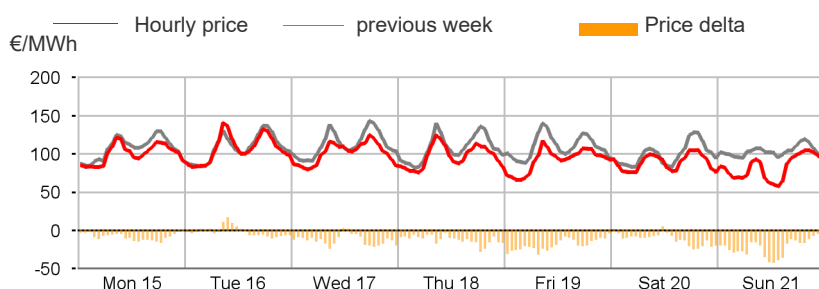


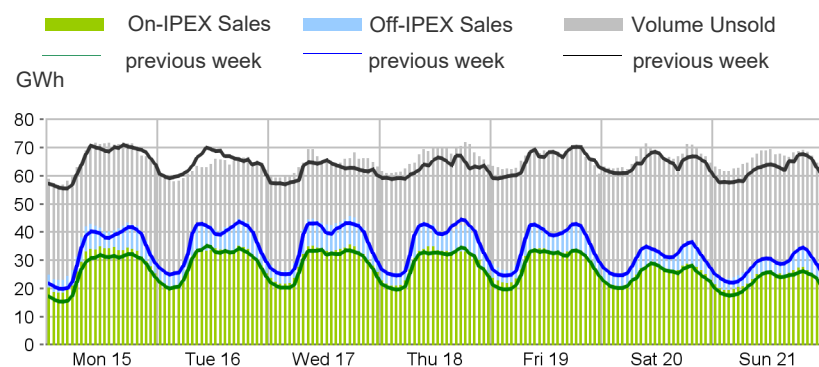
Purchasing Price

	Average	Change	
	€/MWh	Absolute	%
Baseload	96.16	-11.33	-10.5%
Peak	109.68	-10.08	-8.4%
Off-peak	88.65	-12.03	-11.9%
Hourly minimum	58.12		
Hourly maximum	141.12		



Volumes Offered, Sold and Purchased

		Total	Average	Change
		MWh	MWh	%
Bids/offers	National	9,524,282	56,692	+1.5%
	Foreign	1,444,844	8,600	+8.2%
	Total	10,969,126	65,292	+2.3%
Sales	National	4,351,878	25,904	-0.6%
	Foreign	1,416,931	8,434	+8.3%
	Total	5,768,809	34,338	+1.4%
Purchases	National	5,657,246	33,674	+1.2%
	Foreign	111,563	664	+13.0%
	Total	5,768,809	34,338	+1.4%



Electricity Supply

	MWh	Change	Structure
IPEX	4,654,924	+2.7%	80.7%
Market Participants	2,939,249	-0.1%	51.0%
GSE	329,655	+3.4%	5.7%
Foreign zones	1,386,021	+8.7%	24.0%
Balance of PCE schedules	-	-	-
PCE (including MTE)	1,113,885	-3.3%	19.3%
Foreign zones	30,910	-7.7%	0.5%
National zones	1,082,975	-3.2%	18.8%
Balance of PCE schedules	-	-	-
VOLUMES SOLD	5,768,809	+1.4%	100.0%
VOLUMES UNSOLD	5,200,317	+3.3%	
TOTAL SUPPLY	10,969,126	+2.3%	

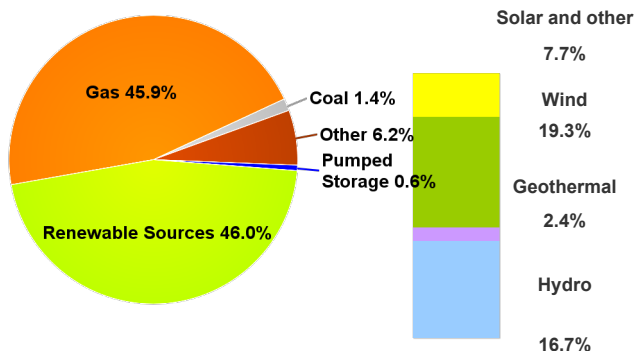
Electricity Demand

	MWh	Change	Structure
IPEX	4,654,924	+2.7%	80.7%
Acquirente Unico	414,142	-1.2%	7.2%
Other market participants	3,431,097	-0.5%	59.5%
Pumped-storage plants	2,230	70.52	0.0%
Foreign zones	111,563	13.1%	1.9%
Balance of PCE schedules	695,892	+22.7%	12.1%
PCE (including MTE)	1,113,885	-3.3%	19.3%
Foreign zones	-	-100	-
Acquirente Unico - National zones	-	-	-
Other participants - National zones	1,809,777	+5.3%	31.4%
Balance of PCE schedules	-695,892		
VOLUMES PURCHASED	5,768,809	+1.4%	100.0%
VOLUMES UNPURCHASED	238,033	+5.2%	
TOTAL DEMAND	6,006,842	+1.6%	

Volumes Sold by Source

	Total	Average	Change	
	MWh	MWh	MWh	%
Conventional	2,323,489	13,830	-2,014	-12.7%
Gas	1,995,551	11,878	-1,885	-13.7%
Coal	59,712	355	-148	-29.4%
Other	268,227	1,597	+19	+1.2%
Renewable	2,002,024	11,917	+1,981	+19.9%
Hydro	724,992	4,315	-173	-3.9%
Geothermal	103,752	618	+0	+0.0%
Wind	839,845	4,999	+2,074	+70.9%
Solar and other	333,435	1,985	+81	+4.2%
Pumped Storage	26,365	157	-126	-44.6%
Total	4,351,878	25,904	-159	-0.6%

Structure of Sales



Zonal Selling Price

	Northern IT		Central-northern IT		Central-southern IT		Southern IT		Calabria		Sicilia		Sardegna	
	€/MWh	Var	€/MWh	Var	€/MWh	Var	€/MWh	Var	€/MWh	Var	€/MWh	Var	€/MWh	Var
Baseload	96.73	-10.0%	96.73	-10.0%	95.70	-11.0%	95.18	-11.4%	93.64	-12.8%	93.64	-12.8%	93.75	-12.8%
Peak	110.82	-7.6%	110.82	-7.6%	109.20	-8.7%	107.74	-9.8%	103.13	-13.4%	103.13	-13.4%	103.74	-13.3%
Off-peak	88.90	-11.6%	88.90	-11.6%	88.21	-12.6%	88.21	-12.6%	88.37	-12.4%	88.37	-12.4%	88.21	-12.6%
Hourly minimum	65.00		65.00		46.25		46.25		46.25		46.25		0.00	
Hourly maximum	144.11		144.11		144.11		144.11		133.00		133.00		144.11	

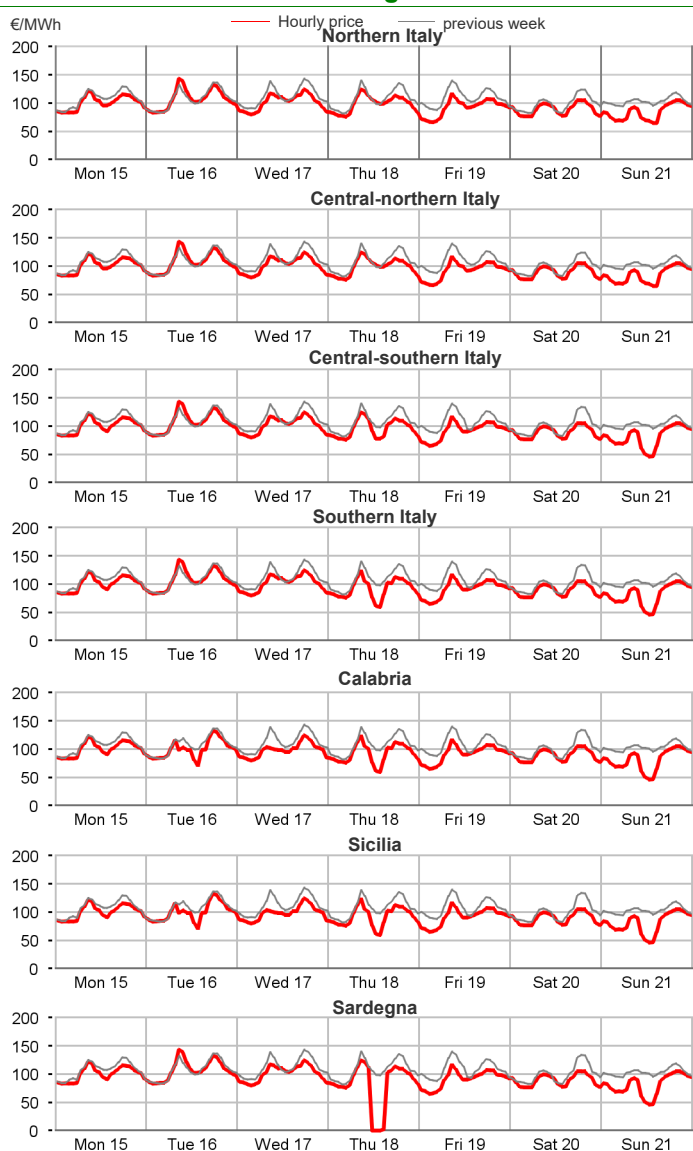
Zonal Volumes

	Northern IT		Central-northern IT		Central-southern IT		Southern IT		Calabria		Sicilia		Sardegna	
	MWh	Var	MWh	Var	MWh	Var	MWh	Var	MWh	Var	MWh	Var	MWh	Var
Offers														
Total	4,582,441	-3.4%	382,903	+3.4%	1,591,188	+2.1%	1,463,883	+15.7%	604,058	+2.0%	579,578	+2.1%	320,233	+10.4%
Average	27,276	-961	2,279	+75	9,471	+192	8,714	+1,184	3,596	+71	3,450	+72	1,906	+180
Sales														
Totale	2,007,527	-10.7%	306,296	+0.8%	588,675	+21.3%	701,485	+25.1%	219,036	-25.0%	268,705	+5.5%	260,154	+11.1%
Average	11,950	-1,432	1,823	+15	3,504	+616	4,176	+837	1,304	-434	1,599	+84	1,549	+155
Purchas														
Totale	3,256,716	+2.6%	484,447	+0.2%	993,510	-0.5%	339,963	-0.5%	108,428	-1.2%	309,930	-2.0%	164,251	+0.2%
Average	19,385	+489	2,884	+7	5,914	-30	2,024	-10	645	-8	1,845	-38	978	+2

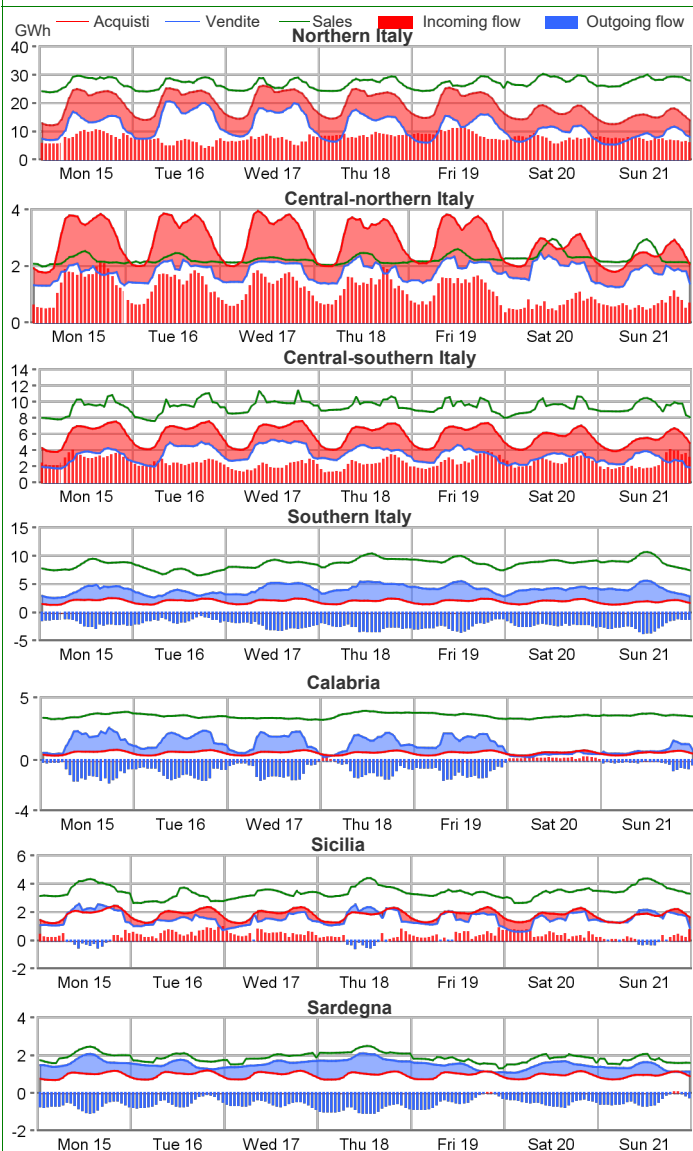
Volumes Sold by Source. Hourly Average

	Northern IT		Central-northern IT		Central-southern IT		Southern IT		Calabria		Sicilia		Sardegna	
	MWh	Var	MWh	Var	MWh	Var	MWh	Var	MWh	Var	MWh	Var	MWh	Var
Conventional	7,771	-11.6%	786	1.2%	1,577	10.1%	1,290	-18.0%	717	-46.5%	692	-18.2%	997	-7.7%
Gas	6,840	-13.1%	731	1.1%	1,392	11.5%	1,064	-21.4%	634	-49.8%	662	-18.8%	555	13.0%
Coal	-	-	-	-	-	-	-	-	-	-	-	-	355	-29.4%
Other	931	0.5%	55	2.2%	184	0.7%	225	3.5%	84	7.1%	30	-3.2%	87	0.2%
Renewable	4,064	-7.8%	1,037	0.5%	1,885	39.6%	2,886	63.4%	586	47.7%	907	35.5%	551	76.2%
Hydro	2,838	-10.1%	228	-3.5%	574	3.3%	374	23.8%	129	22.6%	122	23.9%	51	48.0%
Geothermal	-	-	618	0.0%	-	-	-	-	-	-	-	-	-	-
Wind	35	-28.5%	51	31.1%	1,096	85.1%	2,300	78.0%	415	64.4%	685	40.7%	417	95.1%
Solar and other	1,190	-1.0%	140	0.8%	216	6.5%	212	23.6%	43	8.0%	100	19.0%	83	28.9%
Pumped Storage	114	-35.4%	-	-	42	-60.1%	-	-	-	-	-	-	0	28.5%
Total	11,950	-10.7%	1,823	0.8%	3,504	21.3%	4,176	25.1%	1,304	-25.0%	1,599	5.5%	1,549	11.1%

Zonal Selling Price

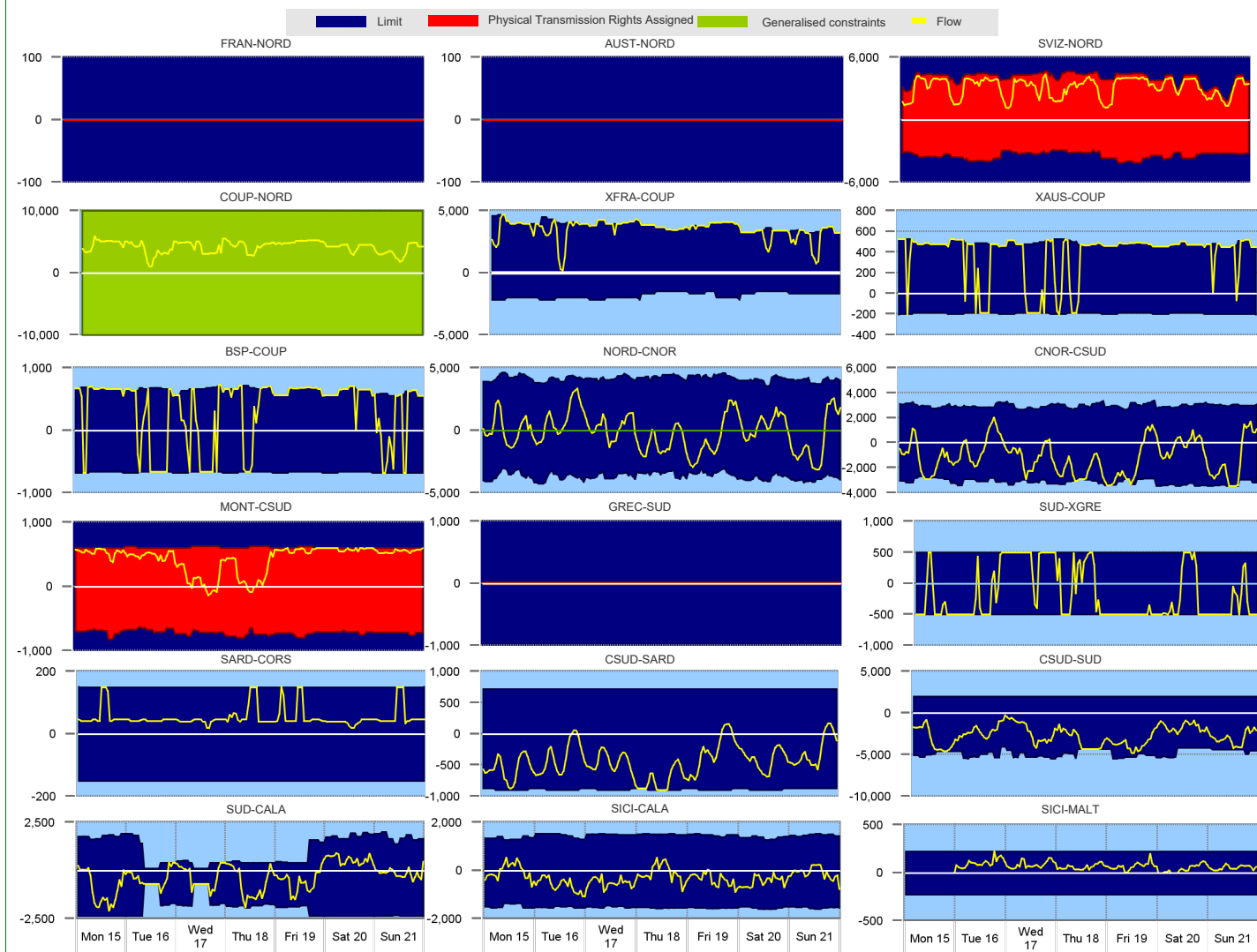


Zonal Volumes



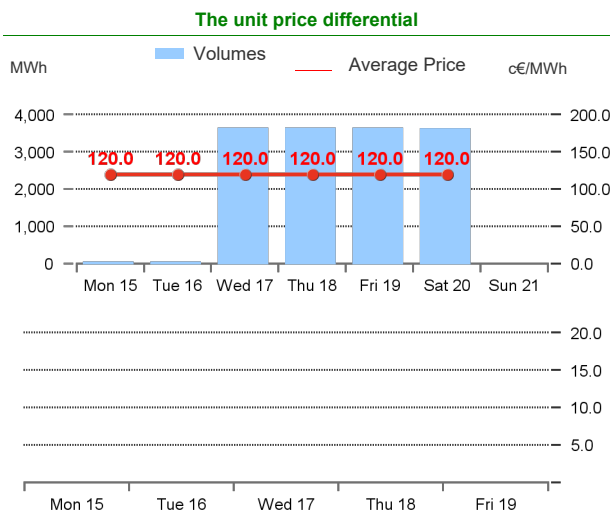
		Rent		Direction frequency		Average Physical Transmission Rights Assigned		Average flow		Average use of Physical Transmission Rights Assigned	
		Thousands of €		% of hours		MWh		MWh		%	
		Week no. 3	Week no. 2	Week no. 3	Week no. 2	Week no. 3	Week no. 2	Week no. 3	Week no. 2	Week no. 3	Week no. 2
Explicit auction Transmissions											
France - Northern It.	FRAN-NORD NORD-FRAN	-	-	-	-	0	0	-	-	-	-
Switzerland - Northern It.	SVIZ-NORD NORD-SVIZ	-	-	100.0%	100.0%	4,021	4,006	3,115	2,920	77.5%	72.9%
Austria - Northern It.	AUST-NORD NORD-AUST	-	-	-	-	0	0	-	-	-	-
Slovenia - Northern It.	SLOV-NORD NORD-SLOV	-	-	-	-	0	0	-	-	-	-
Montenegro - Central Southern It.	CSUD-MONT MONT-CSUD	-	-	6.5%	1.8%	716	662	69	27	0.6%	0.1%
Greece - Southern It.	GREC-SUD SUD-GREC	-	-	93.5%	98.2%	606	601	473	475	72.9%	77.7%
						25	25				
						25	25				
National Transmissions											
Northern It. - Central-Northern It.	NORD-CNOR CNOR-NORD	-	-	48.2%	83.3%	4,177	3,924	1,153	1,651	--	--
Centr.-Northern It. - Centr.-Southern	CNOR-CSUD CSUD-CNOR	544	152	25.6%	57.1%	2,980	2,924	742	1,064	--	2.4%
Central-Northern It. - Corsica	CNOR-CORS CORS-CNOR	-	-	-	-	150	73	-	46	--	--
Corsica - Sardegna	SARD-CORS CORS-SARD	75	-	100.0%	23.2%	150	150	54	45	8.9%	76.8%
Sardegna - Corsica AC	SARD-COAC COAC-SARD	-	-	100.0%	100.0%	110	110	76	82	--	--
Central-Southern It. - Sardegna	CSUD-SARD SARD-CSUD	295	-	8.3%	9.5%	720	720	97	127	--	--
Central-Southern It. - Southern It.	CSUD-SUD SUD-CSUD	377	60	91.7%	90.5%	887	887	490	373	5.4%	--
Southern It.-Calabria	SUD-CALA CALA-SUD	200	49	2.4%	2.4%	2,968	2,932	-	214	--	--
Sicilia-Calabria	SICI-CALA CALA-SICI	-	2	35.7%	32.7%	1,078	1,633	358	402	3.6%	--
Sicilia - Malta	SICI-MALT MALT-SICI	-	-	64.3%	67.3%	1,991	2,350	748	1,106	9.5%	1.8%
				17.3%	13.7%	1,445	1,382	228	363	--	--
				82.7%	86.3%	1,530	1,545	416	604	--	0.6%
				81.0%	100.0%	225	225	74	105	0.6%	1.2%
				-	-	225	225	-	-	--	--
Market Coupling Transmissions											
IT Coupling - Northern It.	NORD-COUP COUP-NORD	-	-	100.0%	0.6%	10,000	10,000	4,220	3,851	--	--
Coupling - France Coupling	COUP-XFRA XFRA-COUP	-	-	100.0%	99.4%	1,815	2,066	-	-	--	--
Coupling - Slovenia Coupling	COUP-BSP BSP-COUP	-	-	100.0%	98.8%	3,818	3,800	3,522	3,132	78.6%	56.0%
Coupling - Austria Coupling	COUP-XAUS XAUS-COUP	-	-	22.6%	18.5%	669	669	581	532	16.7%	12.5%
Southern It. - Greece Coupling	SUD-XGRE XGRE-SUD	-	-	76.8%	75.0%	646	659	596	612	67.9%	65.5%
				14.3%	11.9%	191	191	166	179	11.3%	10.7%
				84.5%	83.3%	486	497	468	471	79.8%	75.6%
				31.5%	28.0%	500	500	424	306	19.0%	9.5%
				68.5%	72.0%	500	500	450	421	53.6%	46.4%

Transiti. MWh



Daily Products Market (MPEG)

Products	Price			Volumes		Open Positions		The unit price differential		
	minimum c€/MWh	maximum c€/MWh	average c€/MWh	MW	MWh	MW	MWh	MWh	Average Price	c€/MWh
Baseload										
Monday 15	120.0	120.0	120.0	1	24	1	24			
Tuesday 16	120.0	120.0	120.0	1	24	1	24			
Wednesday 17	120.0	120.0	120.0	151	3,624	151	3,624			
Thursday 18	120.0	120.0	120.0	151	3,624	151	3,624			
Friday 19	120.0	120.0	120.0	151	3,624	151	3,624			
Saturday 20	120.0	120.0	120.0	150	3,600	150	3,600			
Sunday 21										
Week	120.0	120.0	120.0	605	14,520					
Peakload										
Monday 15	-	-	-	-	-	-	-			
Tuesday 16	-	-	-	-	-	-	-			
Wednesday 17	-	-	-	-	-	-	-			
Thursday 18	-	-	-	-	-	-	-			
Friday 19	-	-	-	-	-	-	-			
Week										
TOTALE				605	14,520					



Forward Electricity Market (MTE)

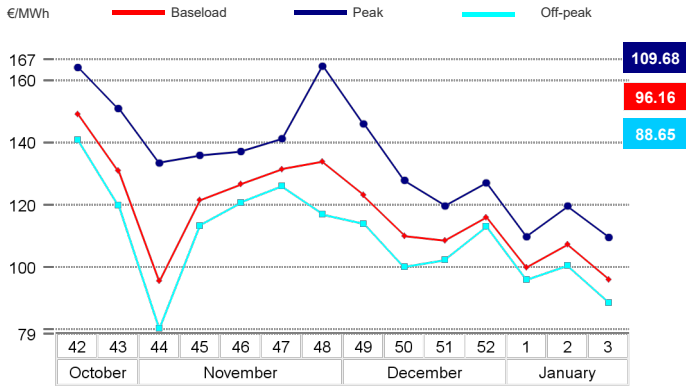
Products baseload	Market					OTC				Total			
	Minimum Price €/MWh	Maximum Price €/MWh	Check Price* €/MWh	% change	Trades No.	Volumes		Volumes		Volumes		Open Positions*	
February 2024	-	-	95.06	-10.0%	-	-	-	-	-	-	-	8	5,568
March 2024	-	-	93.59	-5.0%	-	-	-	-	-	-	-	8	5,944
April 2024	-	-	92.28	0.0%	-	-	-	-	-	-	-	-	-
Quarter 2, 2024	-	-	87.67	-5.0%	-	-	-	-	-	-	-	5	10,920
Quarter 3, 2024	-	-	99.79	0.0%	-	-	-	-	-	-	-	5	11,040
Quarter 4, 2024	-	-	104.55	-5.0%	-	-	-	-	-	-	-	5	11,045
Quarter 1, 2025	-	-	109.72	-5.0%	-	-	-	-	-	-	-	-	-
Year 2025	-	-	89.35	-5.0%	-	-	-	-	-	-	-	-	-
Total													44,517
Products peakload													
February 2024	-	-	105.70	-10.0%	-	-	-	-	-	-	-	2	504
March 2024	-	-	100.63	-5.0%	-	-	-	-	-	-	-	2	504
April 2024	-	-	92.97	0.0%	-	-	-	-	-	-	-	-	-
Quarter 2, 2024	-	-	90.74	-5.0%	-	-	-	-	-	-	-	2	1,560
Quarter 3, 2024	-	-	105.10	0.0%	-	-	-	-	-	-	-	2	1,584
Quarter 4, 2024	-	-	119.25	-5.0%	-	-	-	-	-	-	-	2	1,584
Quarter 1, 2025	-	-	121.48	-5.0%	-	-	-	-	-	-	-	-	-
Year 2025	-	-	96.27	-5.0%	-	-	-	-	-	-	-	-	-
Total													5,736
TOTAL													50,253

* Referred to the last trading session of the week

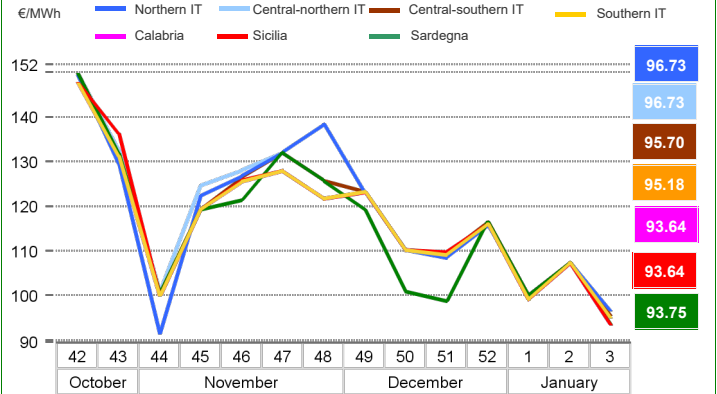
OTC Registration Platform (PCE) - Transactions registered with delivery in week

	Transactions registered			Schedules	Injection		Withdrawal	
	MWh	% change	Structure		MWh	% change	MWh	% change
Baseload	649,172	31.6%	16.5%	Requested	1,456,946	-0.5%	1,809,783	+5.2%
Peak	990	0.0%	0.0%	Rejected	343,061	+10.0%	6	-89.4%
Off Peak	810	0.0%	0.0%	Registered	1,113,885	-3.3%	1,809,777	+5.2%
Non Standard	3,257,276	-4.6%	83.0%	Scheduled deviation	1,461,583	+8.5%	765,690	-1.9%
Bilaterals	3,908,248	0.0%	99.6%	Balance of schedules			695,892	
MTE	1,464	0.0%	0.0%					
MPEG	14,520	-0.8%	0.4%					
PCE total	3,924,232.32	0.0%	100.0%					
Net position	2,575,467	+3.0%	+65.6%					

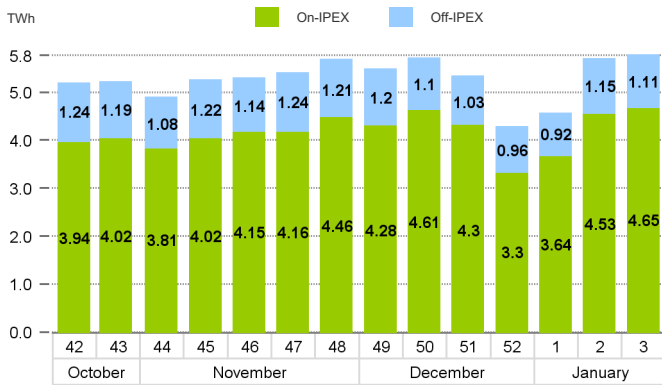
MGP - Purchasing Price (PUN)



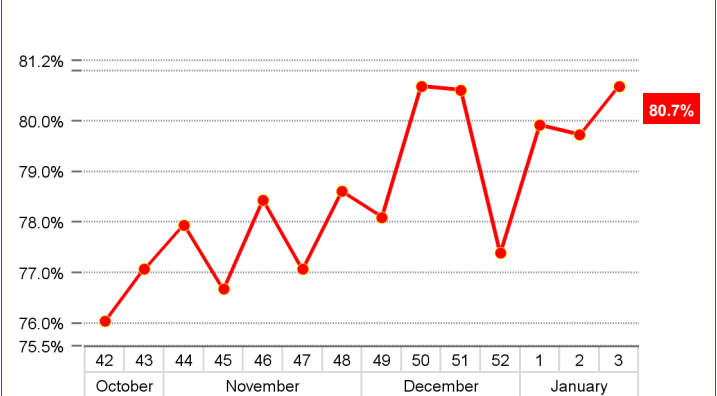
MGP - Selling Price



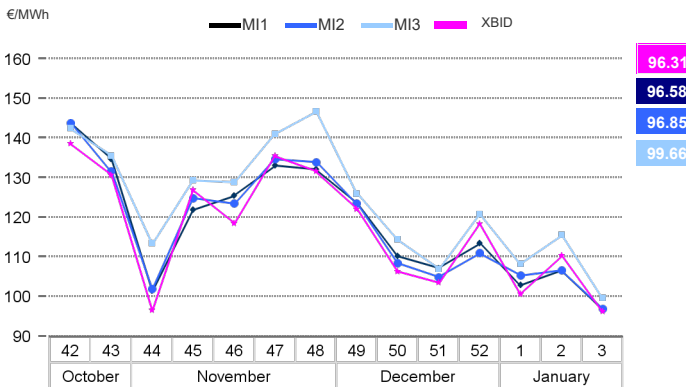
MGP - Volumes



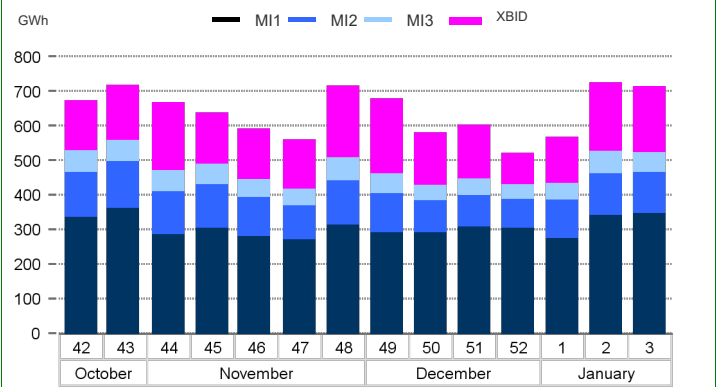
MGP - Liquidity



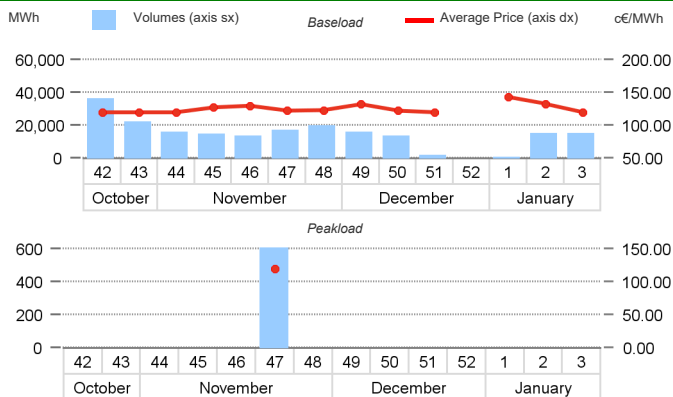
Intra-Day Market (MI) - Prices



MI - Volumes



Daily Products Market (MPEG)



OTC Registration Platform (PCE)

